



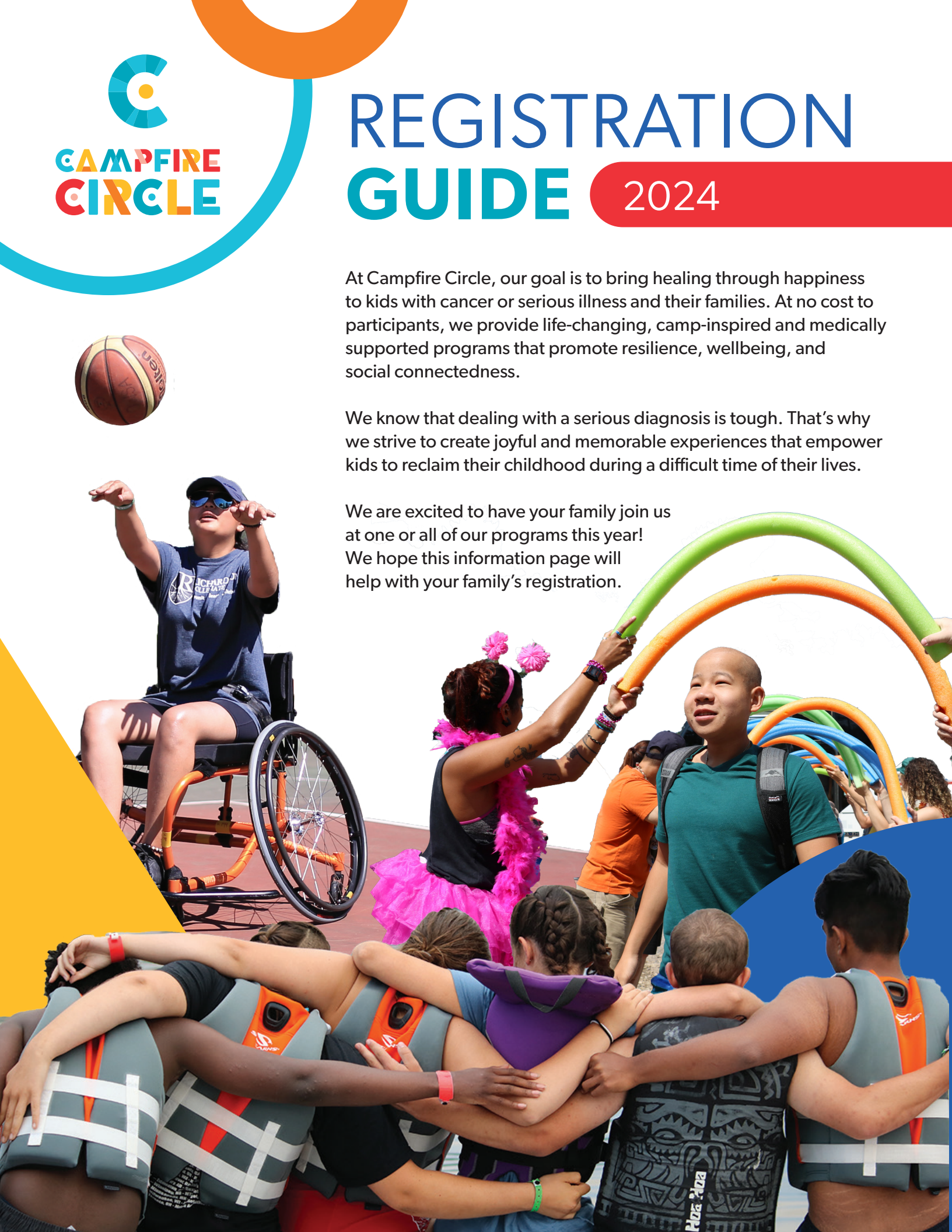
REGISTRATION GUIDE

2024

At Campfire Circle, our goal is to bring healing through happiness to kids with cancer or serious illness and their families. At no cost to participants, we provide life-changing, camp-inspired and medically supported programs that promote resilience, wellbeing, and social connectedness.

We know that dealing with a serious diagnosis is tough. That's why we strive to create joyful and memorable experiences that empower kids to reclaim their childhood during a difficult time of their lives.

We are excited to have your family join us at one or all of our programs this year! We hope this information page will help with your family's registration.



REGISTRATION GUIDE



HEALING THROUGH HAPPINESS

NEW TO CAMP?

New families must complete the New Family Enrollment Form to get started. Click [here](#) or scan the QR code to access the form.



Our medical team will review your application and contact you if they have any questions. Once our team has confirmed your application is complete, you will receive an email with next steps for program registration. Please allow 5 days for this process.

CHOOSING PROGRAMS

Dates and descriptions for our programs are available online at CampfireCircle.org, with an email newsletter sent out to all families seasonally. When you are ready to register, please log in to your Family Account [here](#) or scan the QR code.



Follow these steps for selecting a program:

- 1 Once logged in, click the enrollment link.
- 2 Select the child you would like to register for programs, and 'Add Option' for the program(s) you would like to register. There is no limit to the number of programs you may request. Note: To add a child to your Family Account, go to "My Account" to create a profile for them.
- 3 If applicable, complete any questions related to the program(s) you chose, then click save and continue.
- 4 Selecting a program does not guarantee enrolment, please view our full registration checklist on the following page for more details.

MANDATORY FORMS

Each person planning to attend a camp program (child and adult alike) needs to have all of their forms submitted and approved by our team in advance of the program.

Please refer to the checklist on the next page for further details.

PROGRAM CONFIRMATIONS

Once all of your forms have been submitted and our team has reviewed and approved your application, you will receive an email indicating which programs you have been enrolled in.

REGISTRATION SUPPORT

If you have any questions, please reach out to the camper registration team at

registration@campfirecircle.org

or

1-888-464-6624 ext. 250.

Please let us know if you would like to access a free interpreter to communicate with our staff.

MANDATORY FORMS

Please refer to the checklist below to see what forms are needed to complete your application. Once all the necessary forms are reviewed by our team, you will receive an email indicating which programs you have been approved to join.

<input checked="" type="checkbox"/> FORM TYPE	CAMPER PROGRAMS Registration Tip: Select this program for each child interested in attending the program.	FAMILY PROGRAMS Registration Tip: Register for a family program through one child's account.
<input type="checkbox"/> FAMILY WAIVER	We require one parent or guardian to sign the waiver, which will cover each child participating in programs.	Each parent or guardian who plans on attending camp programs is required to sign their own waiver.
<input type="checkbox"/> PARENT HEALTH FORM	Not required	Required for each adult attending.
<input type="checkbox"/> CAMPER HEALTH FORM 1	Required for each child attending. <i>Note: Make sure you include two emergency contacts (18+) on your medical form. These contacts cannot be the parent/guardians already listed.</i>	
<input type="checkbox"/> CAMPER HEALTH FORM 2	Required for each child attending. <i>Note: You can skip the oncology related questions for a child who does not have a cancer diagnosis.</i>	
<input type="checkbox"/> CAMPER HEALTH FORM 3	Required for each child attending. <i>Note: If you are having difficulty understanding your child's immunization records and updating the chart, please send a picture of your immunization card to registration@campfirecircle.org and we can update the dates for you.</i>	
<input type="checkbox"/> CAMPER HEALTH FORM 4	Required for each child attending. <i>Note: Please submit this form even if your child does not have any medications.</i>	